

## CP 150 12-lead resting electrocardiograph Startup guide

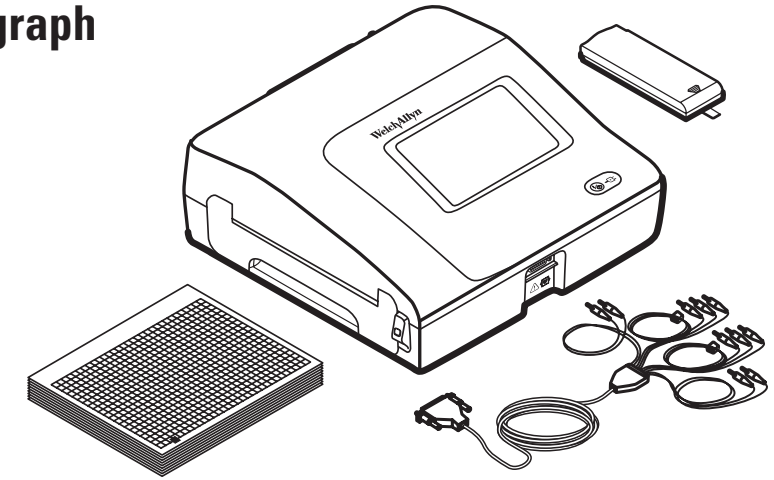
# 106581

726772, 80022131 Ver. A  
©2017, Welch Allyn, Inc.

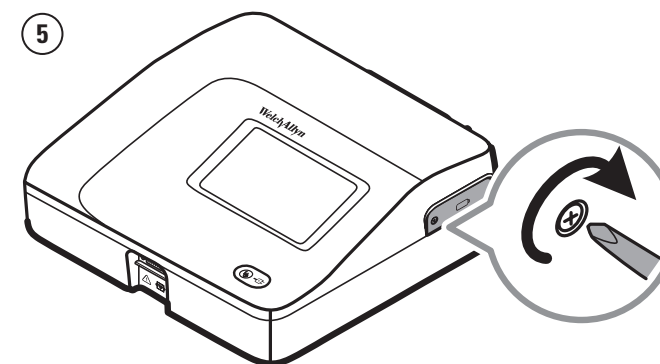
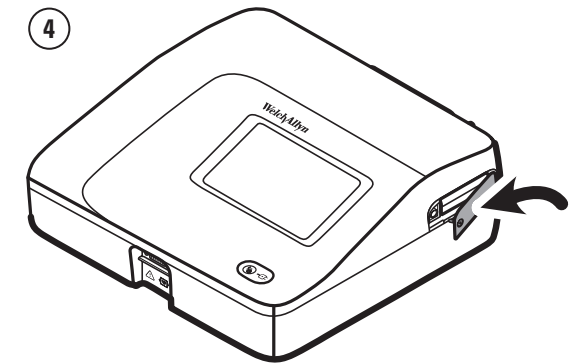
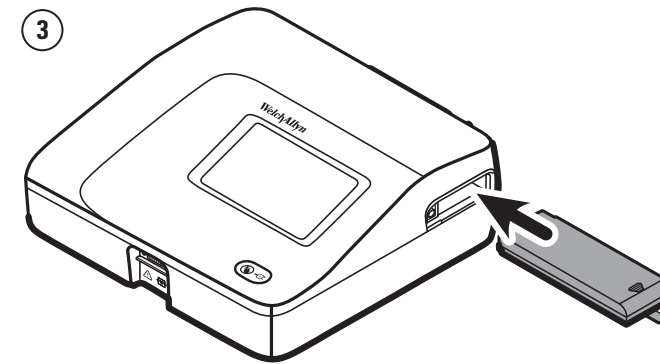
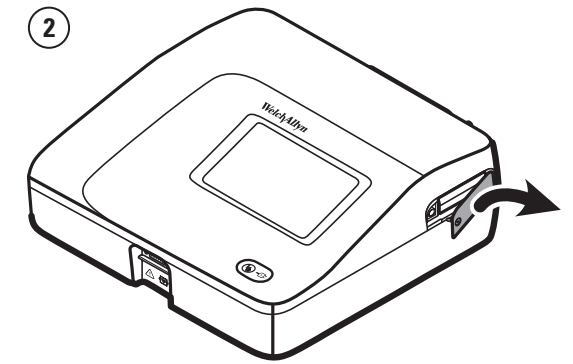
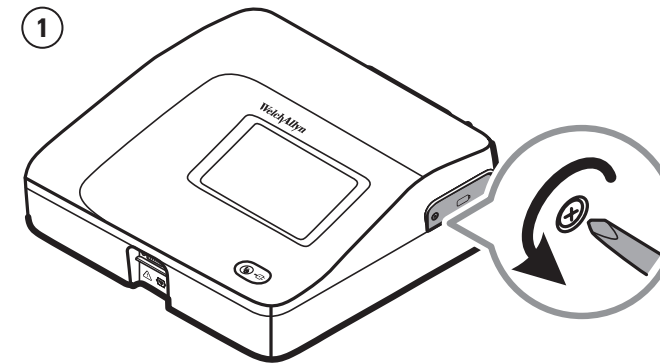
[www.welchallyn.com](http://www.welchallyn.com)



Welch Allyn Technical Support  
([www.welchallyn.com/support](http://www.welchallyn.com/support))



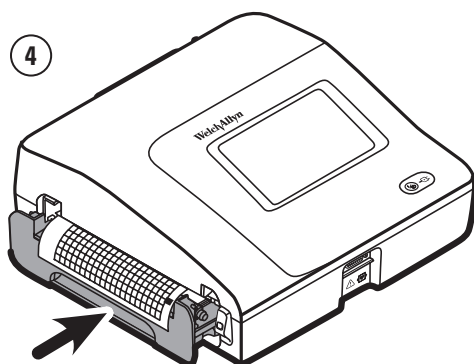
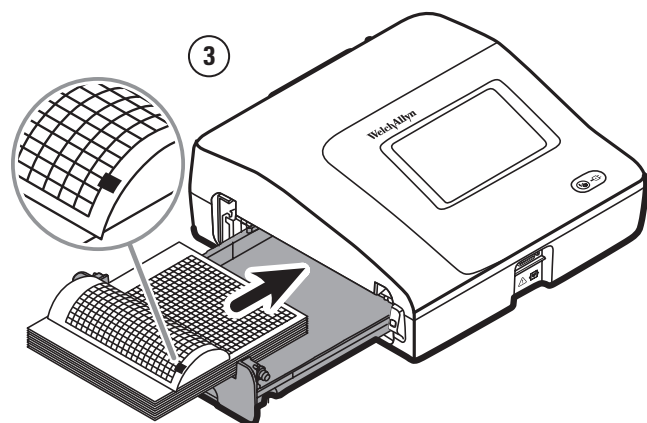
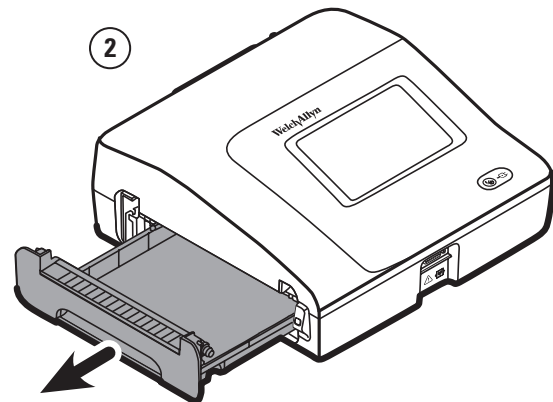
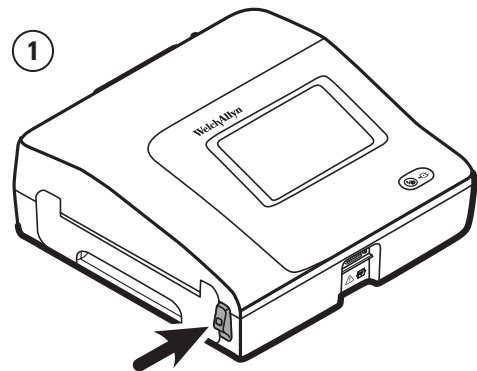
**1**  



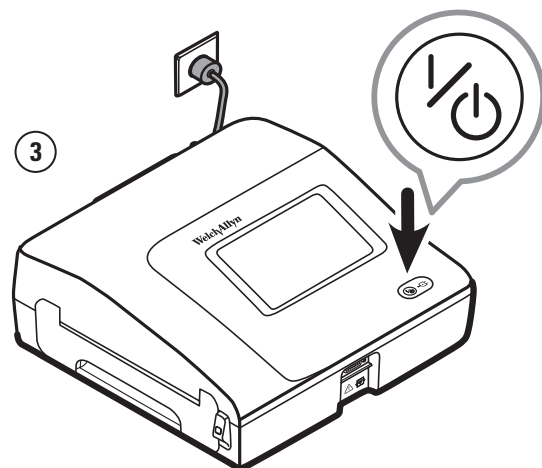
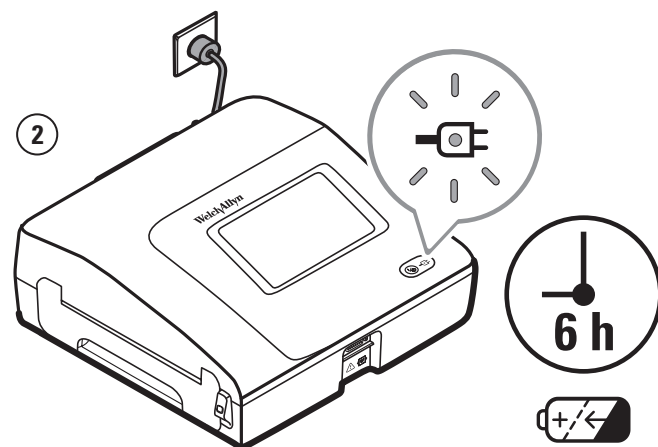
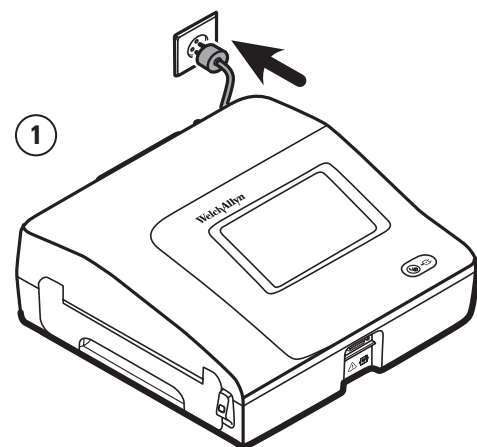
(91)726772



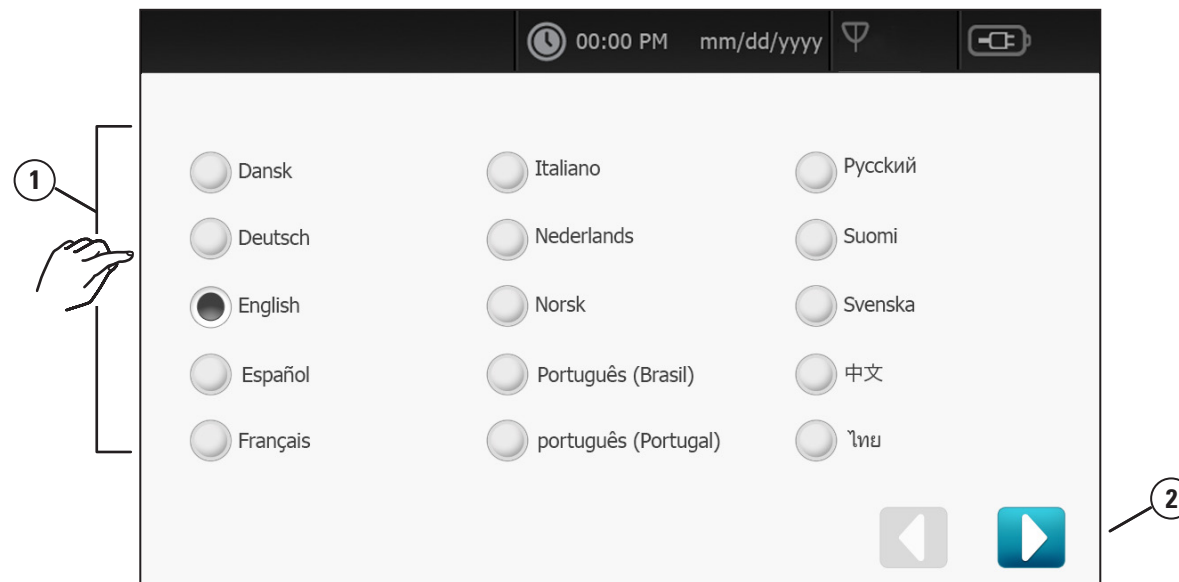
2



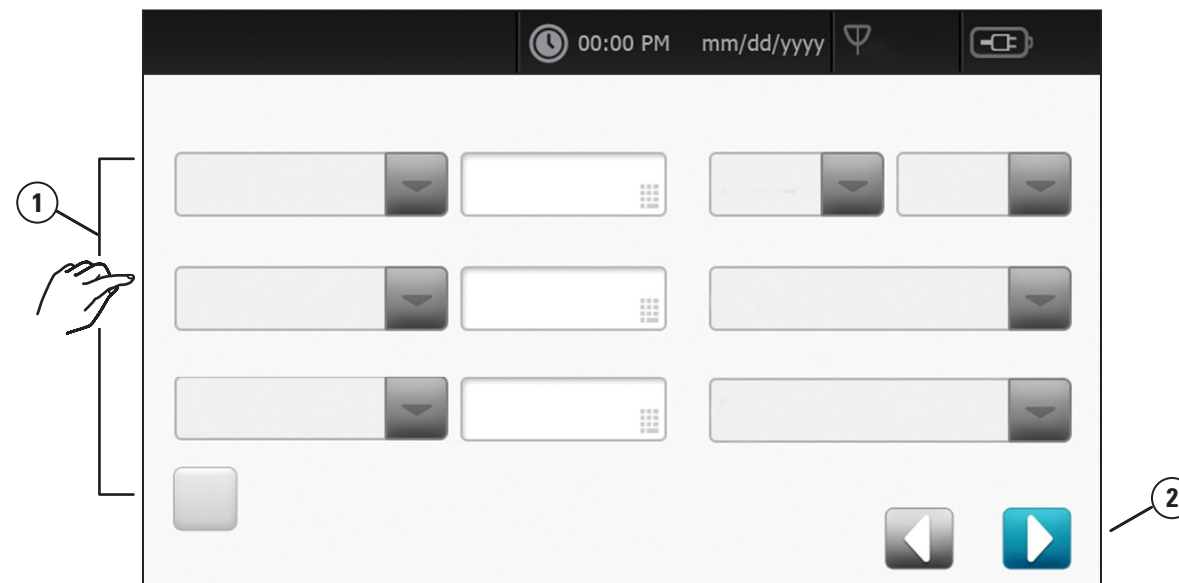
3



4



5



6

